



**If you want to know
more contact your:**

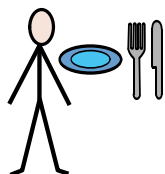


**GIG
CYMRU
NHS
WALES**

Bwrdd Iechyd Prifysgol
Abertawe Bro Morgannwg
University Health Board



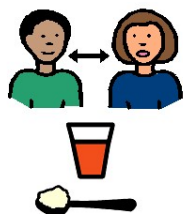
Nurse



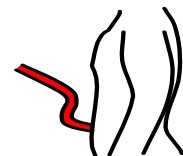
Dietitian



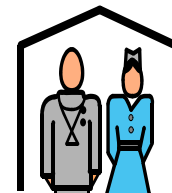
01656 753406



**Speech and Language
Therapist**



PEG



Clinic



**Information
leaflet**

VERSION 3 January 2008
Revision date: December 2009



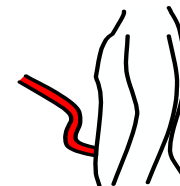
Who we are



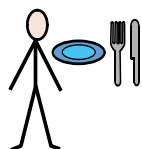
What we do



Doctor



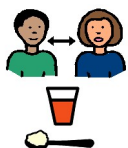
The doctor will check your feeding tube.



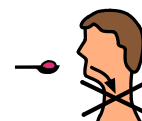
Dietitian



The dietitian will check your feed



Speech and Language Therapist



The Speech and Language Therapist will check your swallow



Nurse



We will change your medication only if it is to do with your PEG feeding.